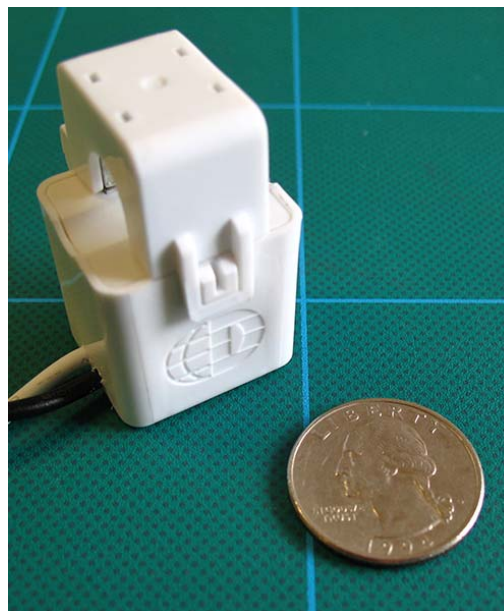


20A HIGH PERFORMANCE MINI CURRENT TRANSFORMERS



The hinged "Mini" CTs are small, low-cost current transformers with high accuracy (<0.5%) over a wide dynamic range with excellent phase shift. The "Minis" are ideal where space is limited such as when metering multiple loads within a panel board. Use for current measurement, energy metering, load surveys, demand metering, energy research, and submetering.



| KEY SPECIFICATIONS | |
|--------------------|--|
| Window Size | 0.4" (10 mm) |
| Current Range* | 0.25 - 40A AC |
| Output | 333 mV @ 20A AC 16.65 mV/A AC |
| Ratio Error** | <0.5% from 0.25 to 40A AC (typical) |
| Phase Error | <1.5° from 1 to 40A AC <2° From 0.25 to 1A AC |

* Depending on meter compatibility. See ELITEpro™ and PowerScout™ specifications for details.
** For maximum performance, keep CT contact surfaces wiped clean and free of debris.

ELECTRICAL

| | |
|-----------------|---|
| Output | 333 mV @ 20 A |
| Wire Polarity | White = Hi, positive (+) Black = Low, negative (-) |
| Phasing | Arrow On Case Points |
| Orientation | Toward Load |
| Frequency Range | 50 to 400 Hz |

MECHANICAL

| | |
|---------------------|---------------------------|
| Case Material | White Nylon, UL 94 V-0 |
| Leads | 2.4 M (8'), 600V, 20 gage |
| Working Temperature | -15 to 60°C (5 to 140°F) |

SAFETY

| | |
|---------------------|--|
| Working Voltage | 600 VAC, Category III |
| Dielectric Strength | 3520 VAC for 1 minute |
| Certifications | Designed to: UL STD 61010-1 CAN/CSA STD C22.2 No. 61010-1 |



PART NUMBERS

| | |
|--------------|---|
| CT-HSC-020-U | Crimp ferrules on leads |
| CT-HSC-020-B | With Banana Plugs (for use with Weather-tight PRO-series Instruments) |

CONTACT US

DENT Instruments, Inc.
Energy & Power Measurement Solutions

925 SW EMKAY DRIVE
BEND, OREGON 97702 USA
541.388.4774 | 800.388.0770
WWW.DENTINSTRUMENTS.COM

