

# DeLogger Plus

A GRAPHICAL TOOL for MONITORING, LOGGING and DISPLAYING DATA

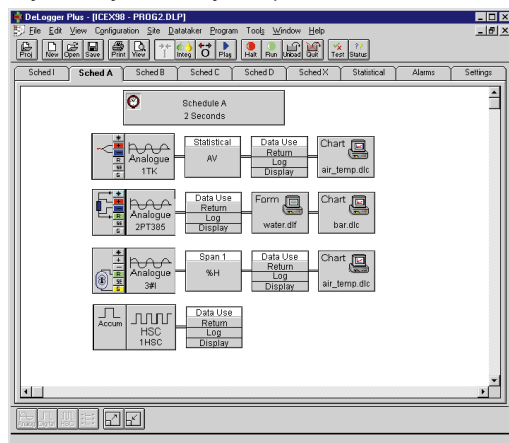
Data Electronics' *DeLogger Plus* makes it easy to program simple or sophisticated data logging projects for the DT50, the DT500 series and the DT600 series of Datataker data loggers.

For programming and supervising a Datataker, DeLogger Plus gives you the choice of a graphical interface or a conventional text input window. For displaying real-time or logged data, DeLogger Plus has chart, form (tabular/spreadsheet) and plain text (raw data) views.

DeLogger Plus running on a computer (the "host") is all you need to program and supervise a Datataker, to monitor sensors and alarms, and to collect data. Connect DeLogger Plus to your Datataker (directly, or by FreeWave radio) and you're in full control of your data.

## Visual Software

DeLogger Plus is Windows®-based software that allows you to program and supervise Datatakers without using the Datataker's command language. Instead of typing commands, you build Datataker programs visually by clicking on icons and selecting from menus in the program builder window. Very little keyboard entry is required.



Program builder window

Unlike some other terminal programs, you don't need the logger present and connected to your computer when creating a program with DeLogger Plus. Programs can be created off-line and downloaded when convenient.

## Projects Aid Organisation

DeLogger Plus uses the "project" concept.

A project contains all the files related to a particular Datataker system. For example, a project might include

- several Datataker programs (for quick re-programming when you need the Datataker to do something different) and
- two chart windows (for viewing today's data in real time along with a replay of yesterday's logged data).

All these components are saved with the project. Launch a specific project and you instantly have everything to hand exactly as it was the last time you used it.

## Data Storage

DeLogger Plus allows you to store data in computer files. You can retrieve, process and display information at a later time. For example, you can replay collected data and view it on a chart.

And for sophisticated data manipulation or graphing, you can import data into a spreadsheet such as Microsoft Excel. You can also use up to eight different filters to extract specific data items, alarms and error data from returned data *directly from DeLogger Plus*.

## Powerful Charting

You can use a DeLogger Plus chart window much the same as you would use a chart recorder: to view data in real time.

But DeLogger Plus has additional charting features. For example, you can

- choose from scroll, sweep or bar charts
- replay data from a previously saved data file
- replay data that has scrolled out of sight in a scroll chart
- display up to 32 channels in one chart
- customise chart attributes such as trace colour and thickness, axis scale and limits, axis ticks and fonts.

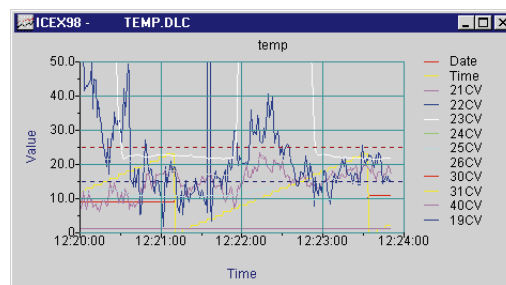


Chart window

## Set-and-Forget Data Site Management

DeLogger Plus and Datatakers do not need constant access to one another.

Typically, you create a Datataker program in DeLogger Plus, then connect to the Datataker and send the program (thereby programming the logger). Once the Datataker is running according to its program (stand-alone mode), you can disconnect. You only need connect to the Datataker again if you want to transfer logged data from it, or receive data and alarms in real time.

So, once you've programmed one Datataker, you can disconnect from it (leaving it running as programmed), then connect to another Datataker to program, monitor or download data.

## Requirements

You need the following minimum IBM® or compatible computer configuration for DeLogger Plus:

- Windows® 3.1 or later
- Intel Pentium® processor (133MHz recommended)
- 16MB of RAM
- 5MB of available hard disk space during installation (3.2MB once installed)

The Datataker must be fitted with a version 3.40 (or later) ROM.

## Limits

Datataker Channel Expansion Modules	2 (except DT50)
Projects	depends on computer system
Open windows	depends on computer system (4 of each type recommended)
Chart windows	16 (4 recommended)
Text view program size	16Kb (4 recommended)
Text view buffer	32Kb
Channels per schedule	50
Channels per form	64
Channels per chart	32 (8 recommended)

## Summary

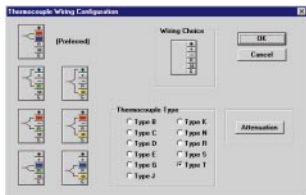
### General Features

- Graphical or command-based (textual) program builder
- Multiple textual and graphical views of data — multiple display windows can be open at the same time
- Data replay facility from file

### Program Builder

- Completely graphical interface
- Supports all Datataker data acquisition schedules and alarm schedules
- Supports all commonly used signal types accepted by the Datataker
- Supports all commonly used channel options provided by the Datataker
- Supports Datataker internal channels and channel variables
- Supports Datataker spans and polynomials
- Illustrates sensor-to-Datataker wiring for every sensor type and configuration

Typical wiring selection dialog box



### Chart Windows

Chart windows plot real-time or logged data in time-based trend/sweep charts or bar charts.

- Scroll, sweep or bar chart modes
- Up to 16 chart windows open at the same time
- Up to 32 channels (traces) per chart window
- Historical mode: stores 8192 data points per trace
- User-definable axes, labels, traces and legends
- Configurable grid and setpoint lines
- Toolbar buttons for frequently used commands
- Multiple windows can be open at the same time
- Can be copied to the clipboard and printed

### Form Windows

Form windows display data in a formatted grid similar to a spreadsheet (columns, rows, column headers).

- Display channel description, the value and its date/time stamp for every reading; one row per reading
- Display each channel's highest and lowest value for the logging session

- Trend indicator for each reading shows whether value is greater than or less than previous reading
- Multiple windows can be open at the same time
- Can be copied to the clipboard and printed

### Text (Raw Data) Windows

Text windows emulate the basic functionality of a communications terminal.

- Direct command entry for creating and editing Datataker programs
- Direct program downloading to data sites
- Display real-time and logged data
- Multiple windows can be open at the same time
- Can be copied to the clipboard and printed

### Replaying Logged Data

- Data saved in a replay file can be replayed in DeLogger Plus (including replay files created by DeTerminal and DeCipher Plus)

### Reporting

- Produce reports with third-party tools such as Excel after importing data from DeLogger Plus.

## More Information

For further information, please contact Data Electronics or our representatives. Our application engineers are happy to talk over your requirements at any time.

## Ordering

DeLogger Plus (on 3.5" 1.4MB floppy disks), includes user's manual and help file

DLPL

Your Datataker distributor is...

Due to continual product improvement, Data Electronics reserves the right to alter the specifications of this product without notice.  
All brand and product names are trademarks or registered trademarks of their respective holders.

<http://www.datataker.com>

Data Electronics U.S.A., Inc.  
22961 Triton Way, Suite E  
Laguna Hills CA 92653 U.S.A.  
1-800-9-LOGGER

Phone 949 452 0750 (Int'l +1 949 452 0750)  
Fax 949 452 1170 (Int'l +1 949 452 1170)  
E-mail [deusa@datataker.com](mailto:deusa@datataker.com)

Data Electronics (Aust.) Pty. Ltd.  
Certified to ISO9002  
7 Seismic Court, Rowville  
Victoria 3178 Australia

Phone 03 9764 8600 (Int'l +61 3 9764 8600)  
Fax 03 9764 8997 (Int'l +61 3 9764 8997)  
E-mail [datataker@dataelec.com.au](mailto:datataker@dataelec.com.au)

ACN 006 134 863

Data Electronics (U.K.) Ltd.  
26 Business Centre West – Avenue One  
Letchworth Garden City  
Herts. SG6 2HB United Kingdom

Phone 01462 481291 (Int'l +44 1462 481291)  
Fax 01462 481375 (Int'l +44 1462 481375)  
E-mail [datataker@dataelec.co.uk](mailto:datataker@dataelec.co.uk)