

# DT53

## Data Logger

# dataTaker®

### Data Acquisition and Data Logging Systems

- Low Power, Event & Pulse Data Logger
- 7 Digital Channels
- Up to 166,500 Data Points
- Embedded Program Option For OEM Use
- Stand Alone & Real Time Data Acquisition
- Remote Monitoring & Control
- Removable Screw Terminals



Specifications

## The dataTaker DT53 General Purpose Digital Unit

The dataTaker DT53 is a general purpose logger suitable for end user or OEM use. The DT53 features 4 digital channels for event, state, counting and outputs, plus 3 high speed counters inputs for rates up to 1kHz. Data logging speed is up to 100 samples per second.

Data can be conveniently and securely stored in battery backed RAM. Alarms may be set for all channels. The DT53's rugged steel construction makes the unit suitable for harsh environments. DataTaker can supply the DT53 to OEM customers with your Logo or preferred colours.

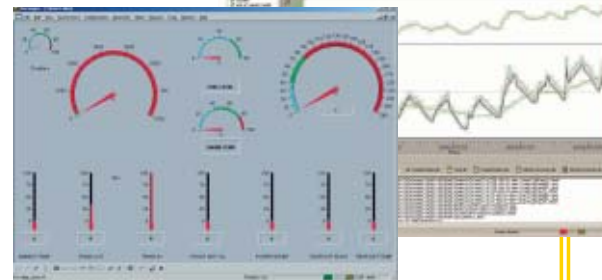
### Applications include:

- Water Flow and Metering
- Tipping Bucket Rain Gauge
- Process & Machine Monitoring
- Production Downtime Monitoring
- Utility Monitoring
- Product Testing
- Fault Finding
- Research and Development
- Event Profiling
- Wind Speed
- Flow Profiling



## The dataTaker Windows Based Software

DataTaker produces a number of software packages including simple text based and graphical ('drag and drop') solutions for programming and management of the dataTaker range. Presentation of data can be by these standard packages or by using 3<sup>rd</sup> party software such as spreadsheets. DeLogger™ Pro 4 is our advanced package for remote and/or automated use of the dataTaker range.



### Head Office

#### Australia

DataTaker Pty Ltd  
7 Seismic Court  
Rowville Melbourne  
Victoria 3178

Tel: +61 3 9764 8600  
Fax: +61 3 9764 8997  
Email: sales@datataker.com.au

### Master Distributors

#### United Kingdom

Grant Instruments (Cambridge) Ltd  
Shepreth  
Cambridgeshire  
SG8 6GB

Tel: +44 (0) 1763 264780  
Fax: +44 (0) 1763 262410  
Email: sales@datataker.co.uk

#### United States of America

Computer Aided Solutions  
8588 Mayfield Rd, Suite One  
Chesterland, OH 44026

Tel: +1 800 9 LOGGER  
Tel: +1 440 729 2570  
Fax: +1 413 375 6137  
Email: sales@datataker.com

#### China

Earth Products China Limited  
Rm 1205-06, Seapower Centre  
73-77 Lei Muk Road  
Kwai Chung Hong Kong

Tel: +852 2392 8698  
Fax: +852 2395 5655  
Email: info@epc.com.hk  
Web: http://www.epc.com.hk



## Digital Channels

### Number of Channels

Bi-directional channels: 4  
Dedicated counter channels: 3

### Digital Input

Number: 4, shared with bi-directional channels  
Input Type: logic level (protected with pull-up)

### Counter Channels

Number: 4 low speed (10Hz) shared with bi-directional channels  
3 high speed (1kHz, sleep mode) with switchable internal clocking options  
Size: 16 bit (65535 counts)

### Digital Output

Number: 4, shared with bi-directional channels  
Output type: open-collector npn transistor  
Rating: +30V, 100mA

### Sensor Excitation

DC Voltage: 5V at 100mA (max.) switched

### Sampling

Maximum sample speed: 100Hz

## Calculation Channels

Any expression involving variables and functions including: sin(), cos(), tan(), asin(), acos(), atan(), abs(), sqrt(), average, maximum, minimum, time of max., time of min., variance, integral, histogram

### Sensors - Comments

A wide range of sensor scaling and linearising facilities are provided including polynomials, expressions and functions

## Scheduling of Data Acquisition

Number of schedules: 4 acquisition schedules  
1 immediate schedule  
1 alarm schedule  
1 statistical Schedule

Scan triggers: time base or digital event  
Conditional scanning: while digital input high  
Time based scheduling: from seconds to months in increments of 1 second, 1 minute, 1 hour and 1 day  
Maximum scheduled rate: 1 second or as fast as possible, typically 100 samples per second  
Dynamic scan time base change: yes  
Maximum number of channel entries: 110

## Alarms

Condition: high, low, within range and outside range  
Delay: optional time period for alarm response  
Actions: set digital outputs, execute any *dataTaker* commands. Alarms can be combined in a logical fashion

## Data Storage

### Internal

Type: battery backed SRAM  
Capacity: 166,500 data points

### Download Data Format

Format: ASCII floating point, fixed point or exponential formats  
Compatibility: spreadsheets, word processors, graphing packages, statistical programs and SCADA software

## Serial Interface (RS232)

The DT53 is programmed and data extracted via the RS232 serial interface  
Speed: 300 to 9600 baud (9600 default)  
Handshake: XON and XOFF  
Wake from sleep: yes  
Isolation: 500V  
Compatibility: computers, modems, satellite-modems, radio-modems and printers

## System

Processor type: Z180, 18 MHz  
Program storage: FLASH  
Data storage: SRAM, battery backed  
Indicator LED: sampling

### Real Time Clock

For time stamping of data, scheduling and timers  
Normal resolution: 1 second  
Accuracy: 2 seconds per day (25°C)

### Power Supply

Voltage range: 11 to 24Vdc or 9 to 18Vac  
External battery input: 6V lead acid

### Power Consumption

In normal mode: 1W (2W with ext. battery charging)  
Sleeping: 2mW (350µA from 6V battery)  
Typical low power operation: 20mW

### Internal Backup Battery

For real time clock and internal data storage backup  
Type: 3V 1/2AA Lithium

## Physical and Environment

Construction: Powder coated fabricated steel  
Dimensions: 260 x 110 x 55mm  
Weight: 1.5kg (2.5kg shipping)  
Environment temperature range: -45°C to 70°C  
Humidity: 85%, non-condensing

## Accessories Included

Comms cable: for PC  
Software: Resource CD which includes DeLogger, DeTransfer, DePlot applications  
Manuals: "Getting Started with dataTaker" "User's Manual"

Line adaptor: 110/240Vac, 500mA

## Optional Accessories

### External Battery (Recommended)

An external battery can be connected for stand alone data logging. The battery can be re-charged by the DT53 when main supply is restored/applied. (See power supply above)  
Chemistry: lead acid gel cell  
Voltage: 6V  
Maximum charge current: 200mA  
Temperature compensation charging: -10°C to +70°C  
Operating time with 4Ahr battery:  
Normal: approx. 24 hours  
Low power: approx. 12 months

### External Battery

Capacity: 1.2Ahr (GC-1.2) or 4Ahr (GC-4) for mounting external to the DT53

### Internal Battery

0.5Ahr (Lead Acid) - factory fitted

### Portable Carrying Case (PE500)

Capacity: 1 DT53 unit + battery  
Environmental protection: IP66

### DeLogger™4 Pro

Graphical programming and supervision software. Supports a large network of DT50, DT500 and DT800 range units connected via modem. Features include comprehensive plotting, reporting, mimics, database, web publishing and other powerful capabilities.

## Warranty

The dataTaker DT53 is covered by a 3 year warranty on workmanship and parts. For further information on the dataTaker range, or for useful downloads, visit the dataTaker web site at [www.datataker.com](http://www.datataker.com) or contact your nearest Datataker office or dealer.

[www.datataker.com](http://www.datataker.com)

**dataTaker**®



Australia Only

dataTaker, DeLogger, DeTransfer, DePlot are either registered trademarks or trademarks of Datataker Pty Ltd.

Your local dealer

